

# EpiValley 8380



## Table of Contents

Product Features .....	3
Technical Specifications.....	3
System Requirements .....	4
Installation Procedure.....	4
<b>Installation in Windows XP</b> .....	5
Start Installation.....	5
USB Driver Installation.....	7
Un-installing Procedure .....	8
Launch Access Manager .....	10
Activation Procedure.....	11
Setting Up Internet Connection.....	12
Settings And Information .....	13
<b>Installation in Mac OS</b> .....	18
Installation Procedure .....	18
Un-installing Procedure .....	19
Access Manager Installing Guide .....	20
Launch Access Manager .....	23
Setting Up Internet Connection.....	24
Network Settings.....	24
<b>Installation in Linux</b> .....	26
Installation Procedure .....	26
Configuration Of The Internet Connection on Text Interface.....	27
Configuration Of The Internet Connection On Graphic Interface .....	30
FAQ.....	37

## PRODUCT FEATURES

- New Sleek Slim and Stylish design with a internal antenna.
- Supports Windows 2000, XP, Vista32/64 and Windows 7.
- Supports Mac OS version
- Supports selected version of LINUX OS
- Complete PNP functionality support on Windows OS.
- Support the PC-Voice functionality and Ear-Jack\* (Presently the voice functionality is limited to the \*228 activation process)
- Supports SHDR functionality for improved throughputs
- Supports Hybrid mode of operation between CDMA 1x and HSIA
- Supports Standard USB 2.0 interface (High Speed)

## TECHNICAL SPECIFICATIONS

Functions	Specifications	
<b>Main Operation Chip</b>	QSC-6085	
<b>CDMA Standard</b>	IS-856-A, TIA/EIA/IS-2000, IS-98E	
	Backwards compatibility with IS-95 A/B	
<b>Frequency Band</b>	Cellular 800 Single Band Support	
	Band Class 0	
	TX: 824 ~ 849 MHz	
	RX: 869 ~ 894 MHz	
<b>Transmit Power</b>	<b>200mW</b>	
<b>Power supply</b>	USB Power	
<b>LEDs</b>	1 Multi-Color LED	
	RSSI Level: Normal (Green) / Weak (Orange) / No service (Red)	
<b>PRL/OTA support</b>	IS-683C	
	Roaming (PRL Support) and Over the Air Service Provisioning (OTASP)	
<b>Antenna</b>	Intenna / Rx Diversity	
<b>Interface Type</b>	USB Connector / USB 1.1 (&2.0 Compatible / Full Speed)	
<b>T-Flash</b>	Not Supported	
<b>Voice Jack</b>	Supported (Only for activation procedure)	
<b>Dimension</b>	W:26 D:78 H:10 (mm)	
<b>Weight</b>	Net (15g), Gift box (71g)	
<b>Case Material</b>	PC Plastic	
<b>Operating environment</b>	Operating temperature range	-20C to +60C
	Storage temperature range	-30C to +65C
	Humidity	5% to 95%(non-condensing)
<b>Storage temperature range</b>	-30C to +65C	
<b>Humidity</b>	5% to 95%(non-condensing)	

## SYSTEM REQUIREMENTS

The Photon+ Modem supports an complete Plug and Play feature for the automatic installation of USB drivers and PC-Client tool (Access Manager) on

- Windows
  - Windows® 2000, Windows® XP32/64, Windows® Vista 32 / 64, and Windows® 7 32/64 bit Operating Systems
  - Supports standard USB 1.1 ( USB 2.0 Compatible )
  - 100Mb free hard disk space or above
  - 128Mb RAM or above
- MAC
  - Mac OS X Leopard(10.5) and Snow Leopard(10.6) version
  - Supports standard USB 1.1 ( USB 2.0 Compatible )
  - 10Mb free hard disk space or above
- Linux

The following the version of Linux is supported.

  - Redhat Enterprise Linux 3 & above
  - Fedora Core 5,6 & above (Except 11)
  - SUSE Desktop Linux 9,10 & above
  - Debian Linux 5,6 & above
  - Ubuntu Linux 7 & above
  - Supports standard USB 1.1 ( USB 2.0 Compatible )
  - 10Mb free hard disk space or above

## INSTALLATION PROCEDURE

- The SEC 8380 Photon+ Device supports an complete Plug and Play feature for the automatic installation of USB drivers and PC-Client tool (Access Manager) on Windows® 2000, Windows® Vista 32 / 64 and Windows® 7
- After plugging the SEC 8380 Photo+ Modem on your computer, it will mount a CD Drive, and will execute a Autorun.exe file which will guide you to a Dialer Setup wizard Program.
- If the dialer is already installed on your Computer the program will auto detect and just run the Access Manager program

## Installation in Windows XP

- Insert the Wireless Modem Photon+ into a USB port of your computer. The installer will initiate in about 1 minute and start loading the installation files.

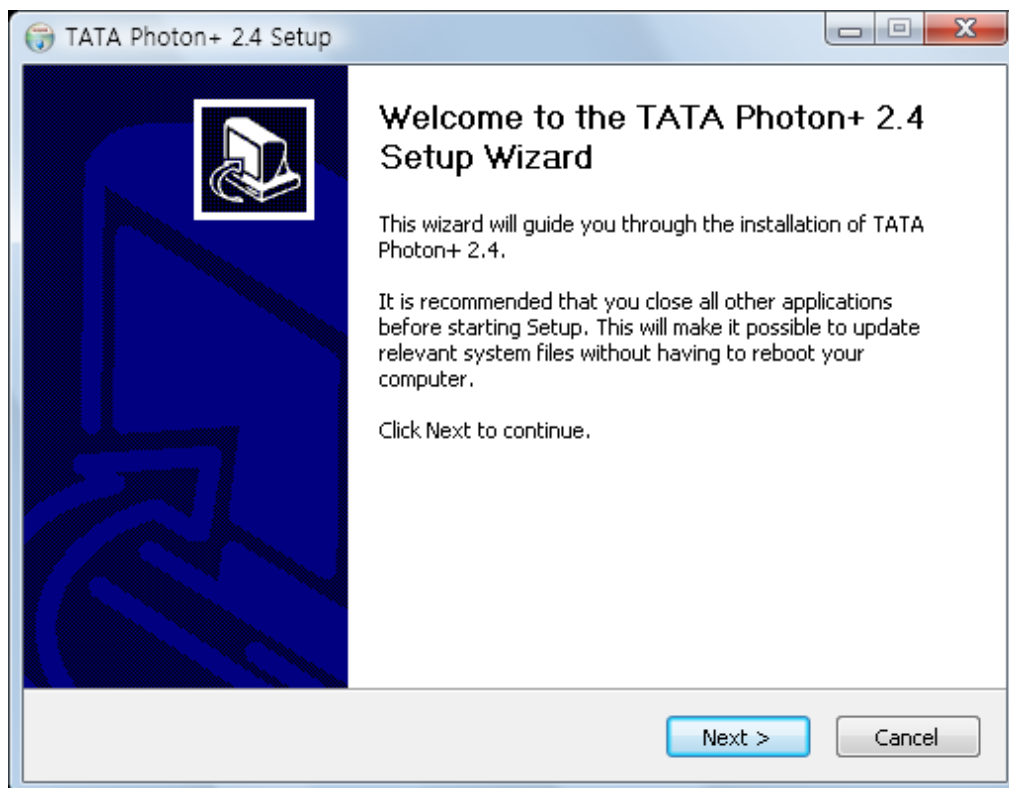
Remember : Autorun.exe program of the Photon + CD installer could be disabled on some computers due to local IT policies. Contact your system administrator in this case.

- If the Autorun feature on Windows is disabled on your computer, you can install it manually.
- Follow the steps below for the first time installation
  1. Open Windows Explorer or My Computer, and the Virtual CD Drive 'Photon+' appears.
  2. Click Virtual CD Drive '**Photon+**'.
  3. Execute '**Autorun.exe**' program for starting the installation by double clicking it.

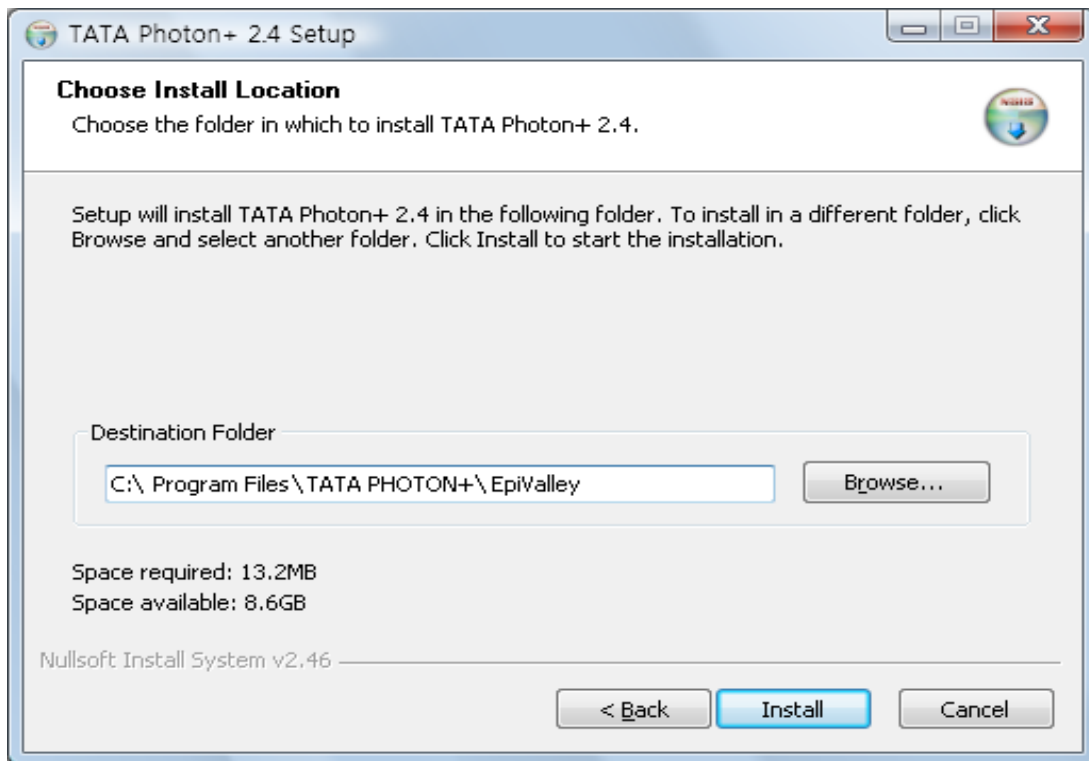
## Start Installation

When the Device is plugged in the Laptop / Desktop, a welcome Splash Screen will be displayed and the Installer will initialize and display 'Welcome to the TATA Photon+ Setup Wizard'

1. Click 'Next' button in order to proceed.

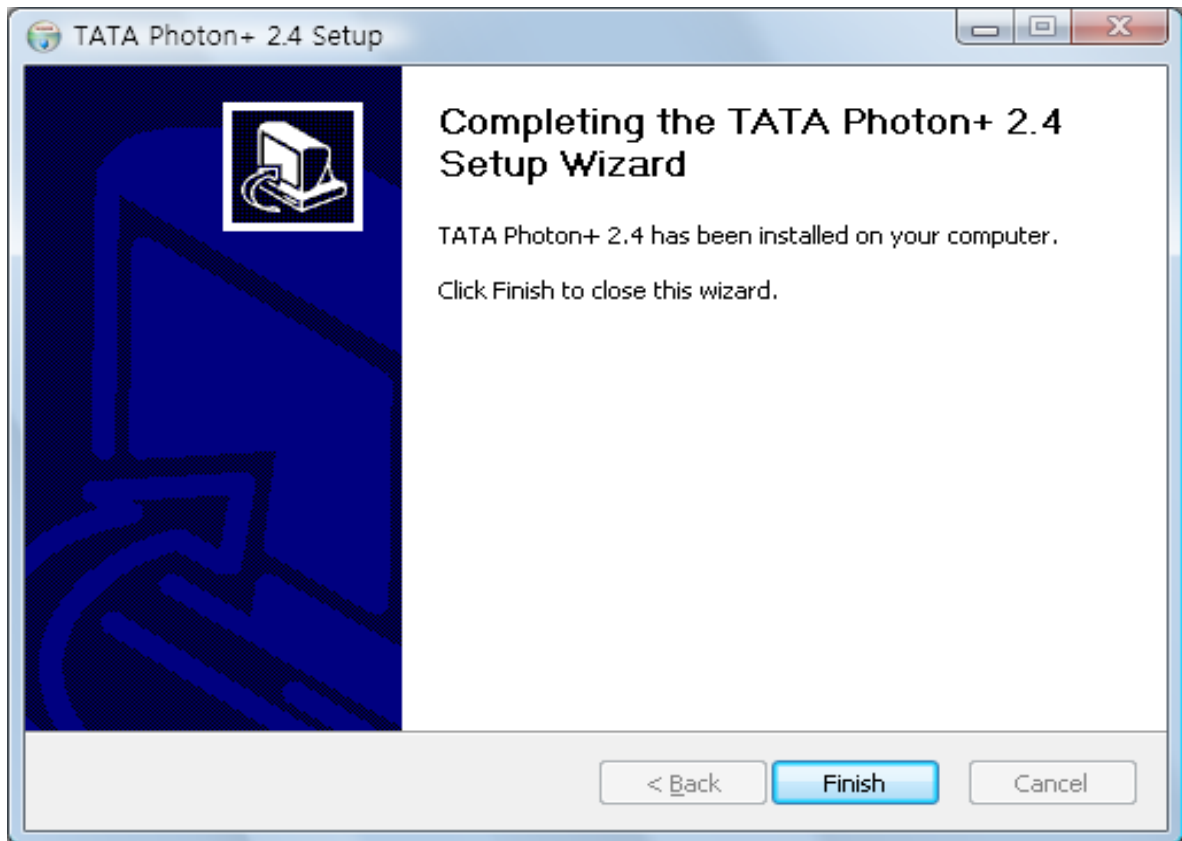


2. Default Installation directory is 'C:\Program Files\TATA\Photon+\EpiValley'. You can change it to the desired directory location by Pressing the 'Browse...' button. It is recommended to install the program in the default installation directory.



Click 'Install' button to continue the installation.

3. The Installation process will continue and once completed you will find a dialogue box as shown below which will indicate the completion of the Dialer (Access manager) Installation Process.



When the installation is completed, click 'Finish'.

#### USB Driver Installation

- After installing the Photon+ Access manager Dialer, the Wireless Modem will be automatically recognized as a modem, and not a CD Drive. This process will be completely automated and once the installation process is completed "Your new hardware is installed and ready to use" will be displayed.
- The Access manager will be launched automatically.



#### **IMPORTANT NOTE**

- DO NOT unplug the Wireless Modem during the USB driver installation.
- DO NOT move the Access Manager launched automatically during the USB driver installation.
- DO NOT restart the computer during the USB driver installation.

※ If the USB driver is not properly installed, Re-run the installation process after completing the steps mentioned in the “3. Uninstalling Guide”.

### Un-installing Procedure

Please note that the Access Manager cannot be Completely Uninstalled while it is running either on the desktop or in the system tray.

#### **IMPORTANT NOTE**

- Please UNPLUG your Wireless Modem before uninstalling.
- Before uninstalling the Access Manager, please CLOSE the Access Manager on the desktop and also from the system tray.

(You will see a 'Photon+ Access Manager' icon at the bottom right of your desktop screen.)

#### **Procedure I**

- To Un-install the Access manager you have to close the application from the desktop as well as from the system tray.
- Exit the Access Manager from the system tray as shown below:
- Select 'Exit' on Tray Menu, Click 'Yes' button.



#### **Procedure II**

Program can be uninstalled by accessing the Start menu.

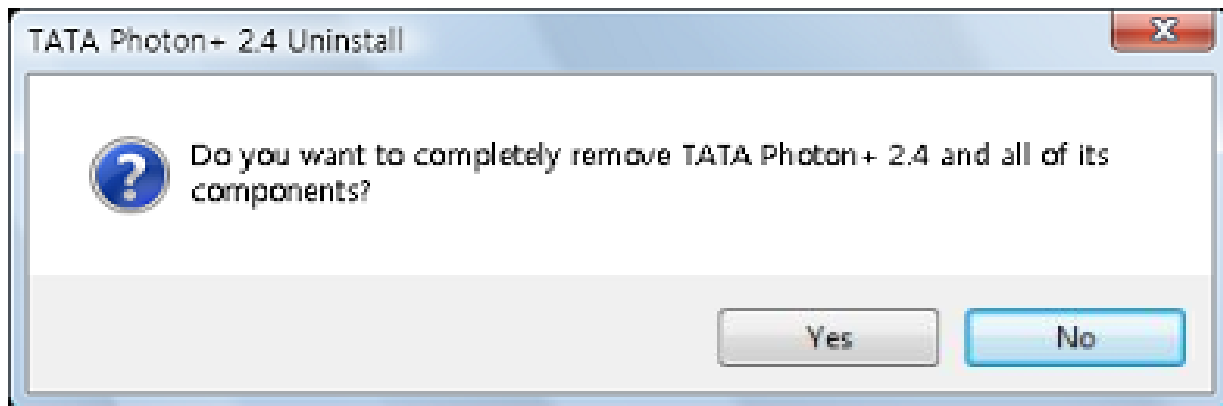
**Open START menu \_Programs \_ TATA Photon+ \_ Epivalley \_ Click Uninstall**

Or

**Open START menu \_ Control Panel \_ Add Remove Programs \_ Change or Remove Programs \_ Click TATA Photon+.**

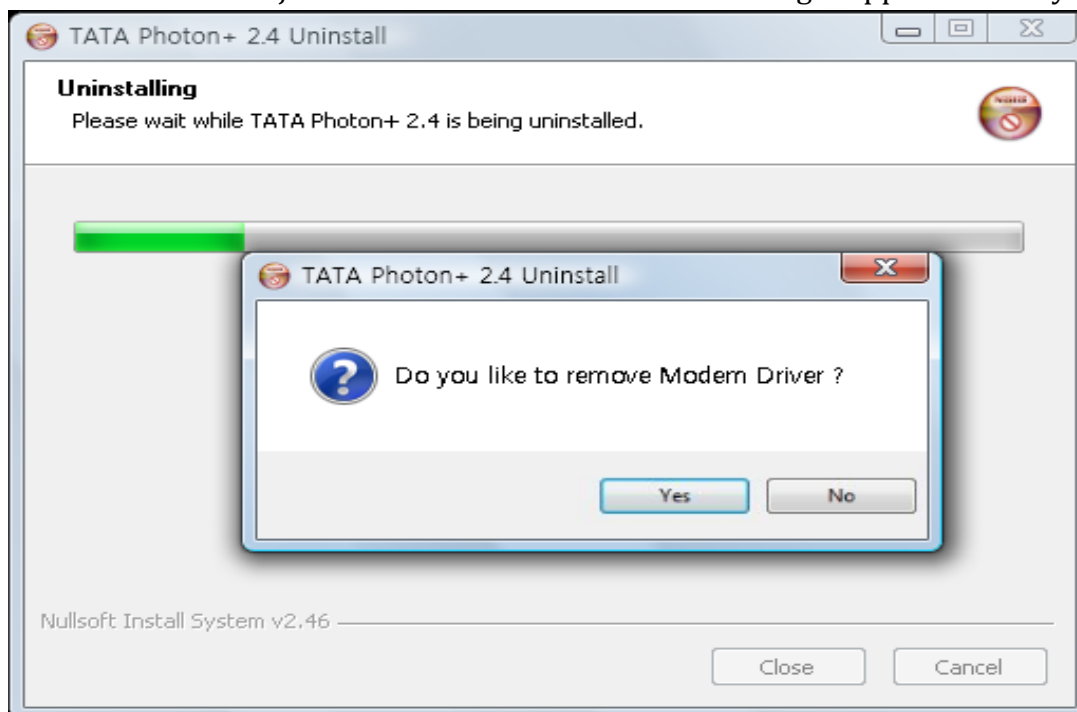
You will see the Screen as shown below:





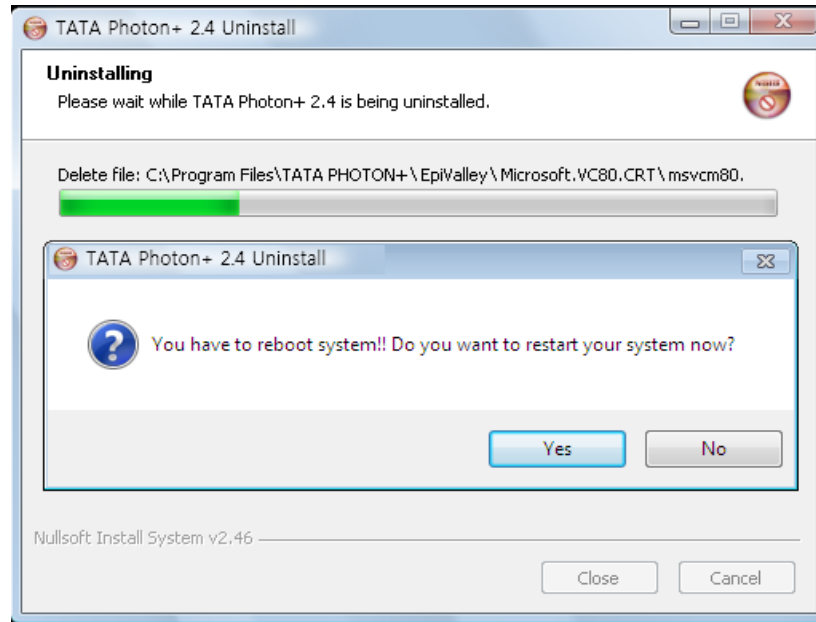
Click 'Yes' button to continue..

- Click 'YES' if you want to remove the Modem Driver Access manager along with the USB Modem Drivers.
- Click 'NO' to just remove the Photon+ Access Manager application only.



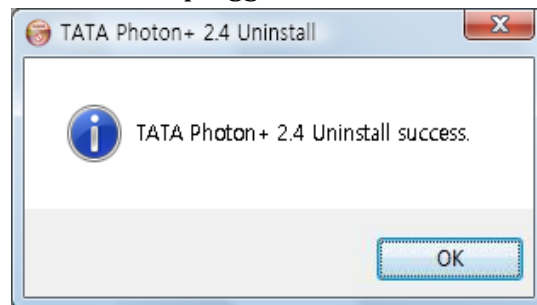
**Remember Uninstalling the Modem drivers requires restarting the computer.**

- Click 'YES' to complete, and your computer will restart.
- Click 'NO' to complete, but its recommended that you restart your system .



- If USB Modem device unplugged during uninstallation process, Below message will pop up.

Note : Your Device should be unplugged



### Launch Access Manager




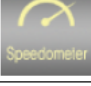


### Running Access Manager

- Plug the Wireless Modem in a USB port, and Access Manager will run automatically









on Windows OS. Otherwise you need to double click 'Photon+'( ) icon on your desktop or select 'Start →All Program →TATA Photon+ →EpiValley→ Photon+ dialer'.

- After initialization, the main window of application will be displayed on the screen as shown below. The main window has six Menus with specific functions.

Menu Item	Description
 Upgrade	Your Dialer can be auto upgraded.
 Activate	You can activate the Modem. Please follow step '5. Activating the Wireless Modem' on page 10.
 Log	Display for the log statistics through service operator's website.
 Speedometer	Display data speed through service operator's website.
 Browser	Open the Internet explore browser.
 Setting	Set General, Lock, Network, Information, Web.

### **Status Information**

- The below table lists the status information on the Access Manager.

Status Item	Description
Status bar and Network signal Information	The status bar indicates the Photon+ or Photon Whiz and display for network signal strength.  
Internet Connection	By clicking below button, you can connect / disconnect Internet Connection.  
Tray ICON	When pressed the Minimize button, the Access Manager will disappear, and you can see the Tray icon.  :Normal Status /  : Disconnected Status

### **Activation Procedure**

If you see the following dialogue on the Access Manager, you should activate the wireless modem as per Instructions from Service Provider by PC Voice.



### IMPORTANT NOTE

- Please Turn ON your PC / Laptop speaker before you dial the activation call to hear the voice instruction.
  - If your Laptop/ Desktop Speakers are not functioning, Please use the ear jack provided on the device, by connecting Earphones.
1. Click 'Yes' button, to continue the activation call. You will hear the activation IVR, which will guide you through the rest of the process.
  2. 'PIN Code Dialog' will pop-up and prompt for entering a 14 digit PIN code. Input the correct PIN Code following the instructions received from the IVR.



3. The activating procedure is successful, '**Programming Successful..**' message will be displayed.

**Note:** For any Error codes encountered while activation process, please contact the Service Provider for further information.

### Setting up Internet Connection



Click "Setting" icon -> Click "Network" tab

### Editing Profile Settings

While installing the Wireless Modem the Internet connection profile is created automatically.



To Add / Edit / Delete a profile, click on the profile **settings** tab-→

Default profile name: TATA.

Number: #777.

User name: internet

Password: internet.

### **IMPORTANT NOTE**

This is default Profile, cannot be deleted or modified by the user.

### Internet Connection



Click the Connect button ( ) flashing on the Access Manager to establish the connection.

1. Click '**Connect**' icon to display the Internet connection profile details.
2. Select the Internet connection profile "TATA"(Default Profile)

There is a default profile to connect to the TATA Indicom web page. Click the below logo at the



bottom right of the Access Manager →

### Settings And Information



Click "Settings" Icon

### Display the Statistic information

1. Click 'Log' Icon.
2. Display for the log statistics through service operator's website.
3. It provides information on the Internet usages such as Date, Duration, Rx, Tx total bytes.

### General Settings

Select 'Setting' Icon → Click 'General' tab.

Items	Description
Auto termination when Windows go to power saving mode	The Access Manager will exit automatically when your computer is switched to power saving mode.
Auto execution when Windows startup	The Access Manager will start automatically when the Windows is booted.
Execute Access Manager on Background	The Access Manager is minimized on the Tray bar.

### Lock Settings

#### Select 'Settings' Icon → Click 'Lock' tab

The default lock value is four zero "0000".

For changing the lock value, follow the steps mentioned under 'Change Lock Code' setup

Items	Description
General Lock	When set, you need to enter a lock code for entering the 'Settings' menu.
Internet Lock	When set, you need to enter the lock code every time you access the Internet connection.
Change Lock Code	You can change the lock code value. 1)Enter the current lock value. 2)Enter the new lock value. 3)Retype the new lock value in 'Confirm New Lock Code'. 4)Click 'OK' button.

- - This configuration is only for PC Client

### Network Settings

#### Select 'Settings' Icon → Click 'Network' tab

You can change the mode of preference as 'Hybrid Mode', '1xOnly' and 'HSIA Only'.

Preference Mode	Description
Hybrid mode	The Wireless Modem will operate in dual mode with Photon+ and 1x periodically.
Photon Whiz Only	The Wireless Modem will operate only in CDMA1x mode without Photon+. You may use the 1xOnly mode in an area without Photon+ coverage.
Photon+ Only	The Wireless Modem will operate only in Photon+ mode without CDMA1x. If you do not need to use the CDMA1x data service, you can disable it.

## **IMPORTANT NOTE**

It is recommendable that you do not change the default mode of preference.

### **Information**

#### **Select 'Setting' Icon → Click 'Information' tab**

The information tab displays the following items:

- 1) Application Version Information.
- 2) PRL ID information
- 3) Wireless Modem information as Model name, F/W version, H/W version, MEID and pESN.

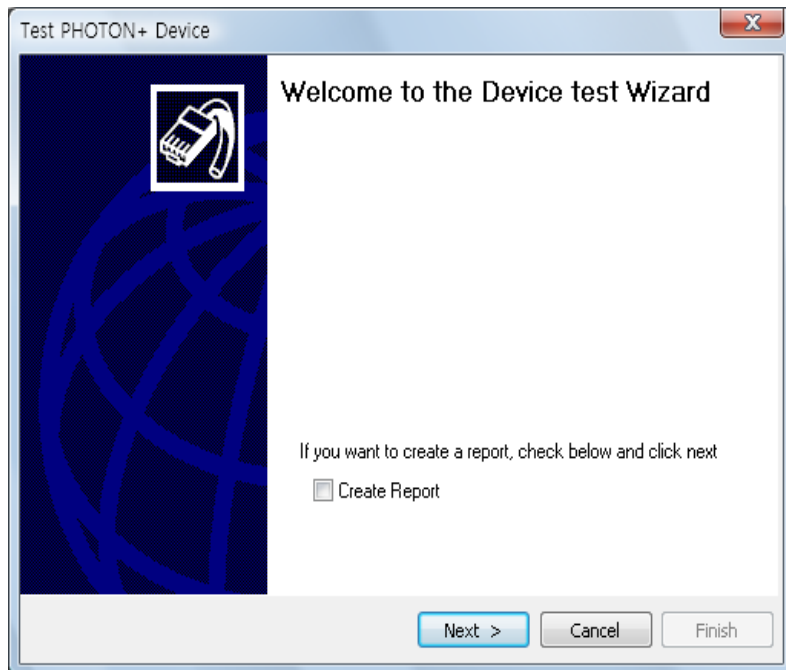
### **Help & Option Tab**

Click Help menu ( **Help** ) at the top right side on the main window of the Access Manager.

Sub Menu	Description
Online Help / Contents	You can access the user manual.
Device Support Page	You can access Device Support Page.
Connect TATA Indicom Forums	You can connect TATA Indicom Forum.
About	It shows 'Application', 'Modem' and 'System' information.

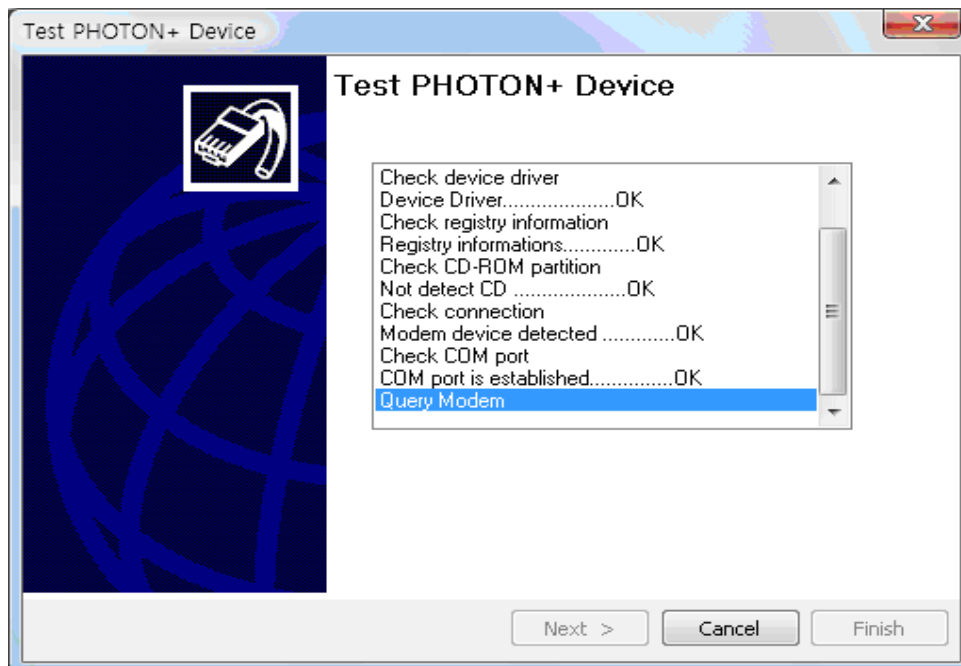
Click Option menu ( **Options** ) at the top right side on the main window of the Access Manager.

To Test Photon+ Device Click on the Test PHOTON+ Device, welcome to the device test wizard will pop up.



Check Create Report if you would like to create a report of the test, And click Next.

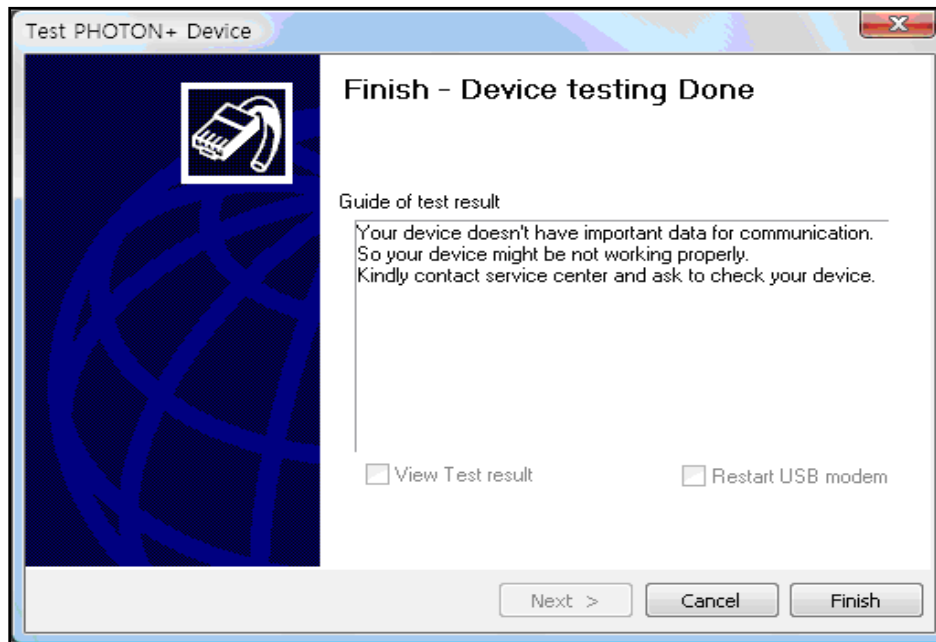
The PHOTON+ Device Test process will start and will display the progress of the tests. Once the Test process is complete, Click Next on the Test PHOTON+ Device to get the results of the test.





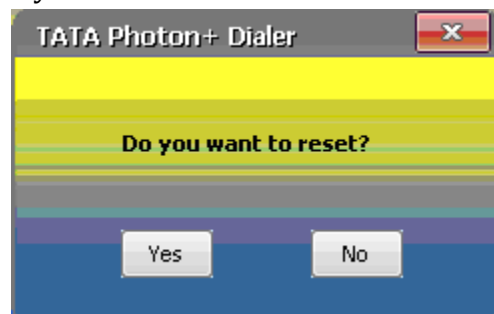
If you want to view the device test result, select View Test result and click finish to view the test result.

If you want to restart USB modem, select Restart USB modem and click finish to restart the modem.



### To Reset All Settings to Defaults

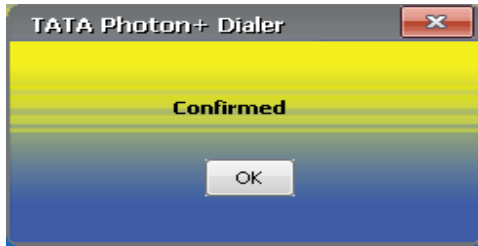
If you want to reset all the custom settings to default, click on Reset All Settings to Defaults.



Click 'Yes' if you want to reset all Settings to default.  
The dialer will prompt for password



Enter the password as '5298' and click 'OK'.




## Installation in Mac OS

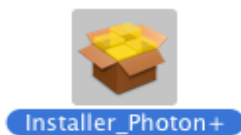
The Wireless Modem does not support the automatic installation function on Mac operating system. You need to install it manually following the recommended steps.

### Installation Procedure

Insert the Wireless Modem into a USB port on your Mac computer. You may see the Photon+ CD Driver on the Desktop.

### Start the Setup

- 1) Double click the Photon+ CD Driver on the Desktop.
- 2) You may see the following Installation  packages.



### **NOTE:**

First of all, you have to install the '**USB Modem Driver**' installer package, and then need to install the '**Installer\_Photon+**' package.

### USB Driver Installation

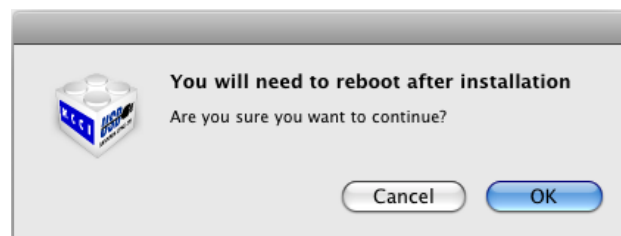
Double click the 'USB Modem Driver' installer package.



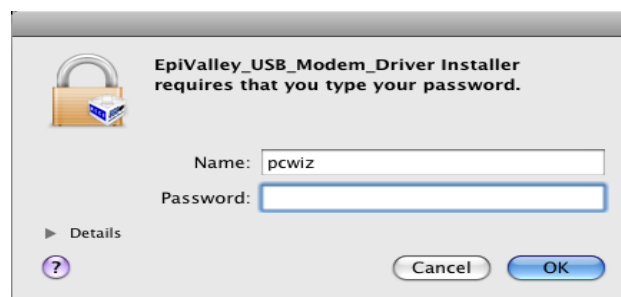
1) Click the 'Install' button in order to proceed.



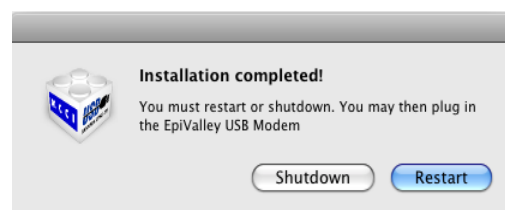
2) Click the 'OK' button.



3) Input your 'Password' when prompted, and click the 'OK' button.



4) Click the 'Restart' button in order to add the system file.



### [Un-installing Procedure](#)

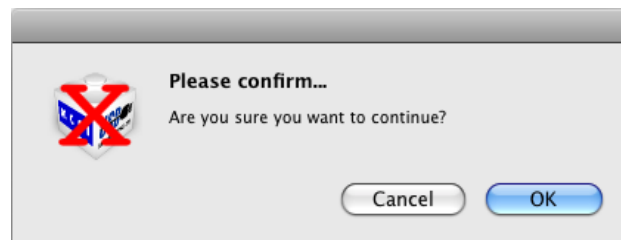
Double click the 'USB Modem Driver' uninstaller package.



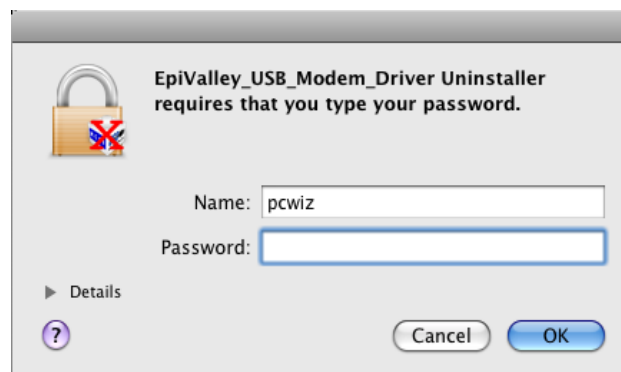
1) Click the 'Uninstall' button in order to proceed.



2) Click the 'OK' button.



3) Input your 'Password' when prompted, and click the 'OK' button.



4) Click the 'OK' button in order to complete the uninstallation proceeds.



### [Access Manager Installing Guide](#)

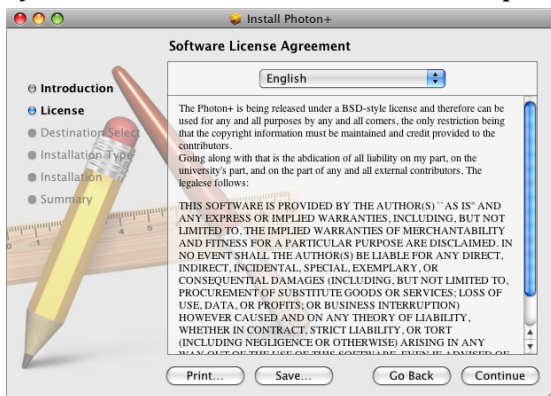
1) Double click the 'Photon+ Access Manager' installer package.



2) Click the 'Continue' button in order to proceed.



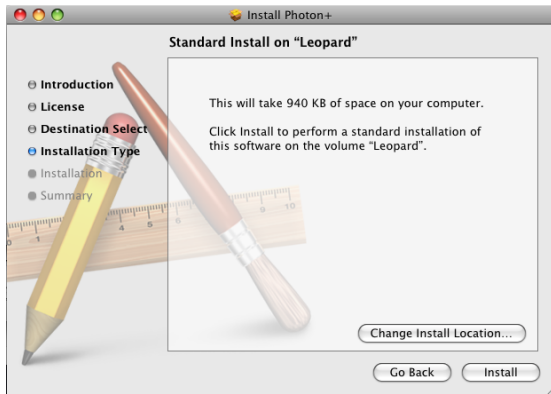
3) Click the 'Continue' button to accept the Software License Agreement.



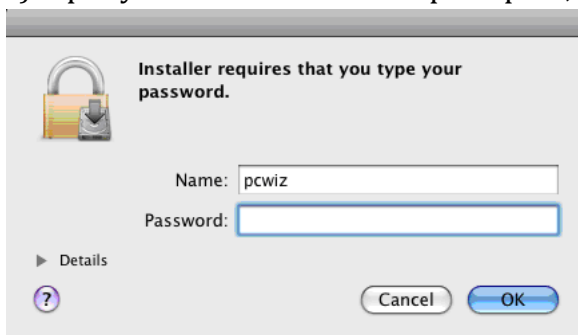
4) Click the 'Agree' button.



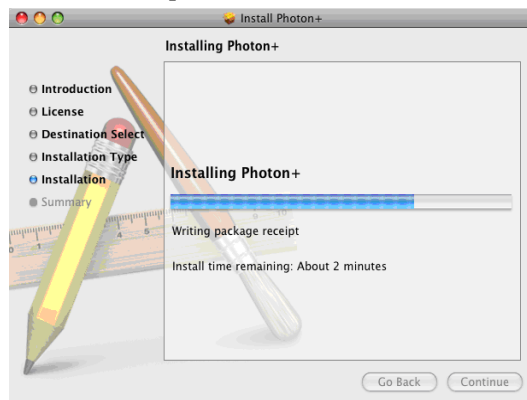
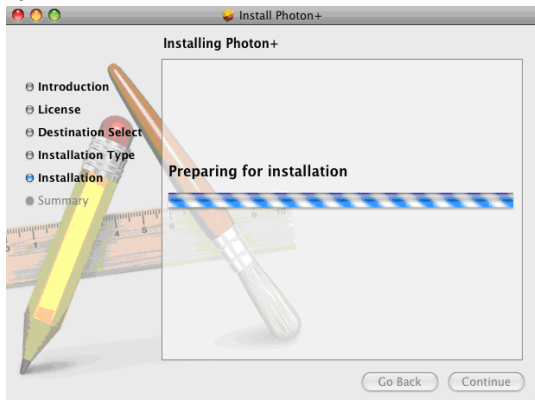
5) Click the 'Install' button to start installation.



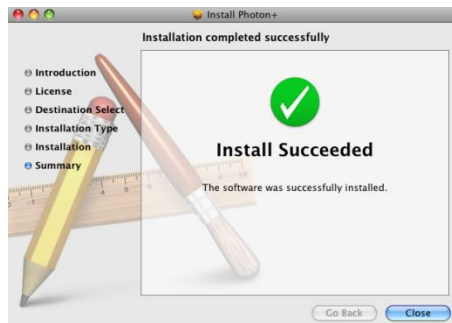
6) Input your 'Password' when prompted, and click the 'OK' button.



7) Click the 'Continue' button to start the installation process.



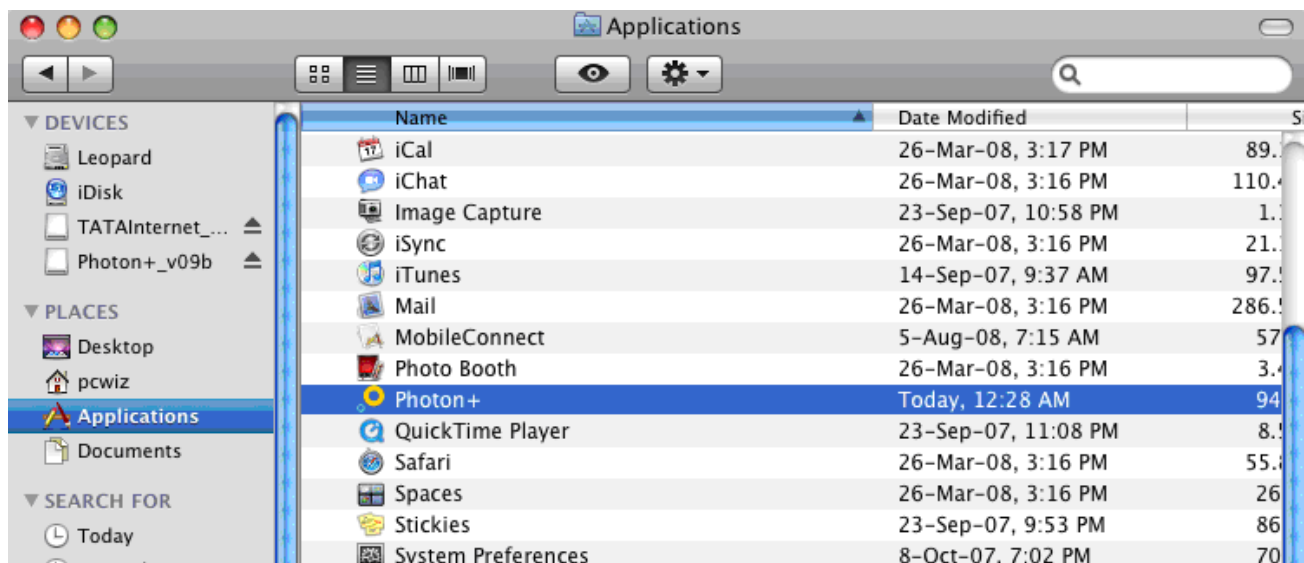
8) Click the 'OK' button to complete the installation process.



## Launch Access Manager

Plug the Wireless Modem in a USB port, and click the 'Photon+ Access Manager' in the Applications places.

Click the 'Go' → Select the 'Applications' in Places → Click the 'Photon+' Access Manager item.



After initialization, the main window of the application will be displayed on the screen as shown below.




The Access Manager will try to search for the Wireless Modem device, and then the Access Manager will be displayed on the screen as shown below.




## Setting Up Internet Connection

### Internet Connection



Click the Connect button (  ) for connecting to the Internet service. After the connection is established, the Total packets and Current Rate will be displayed as shown below.

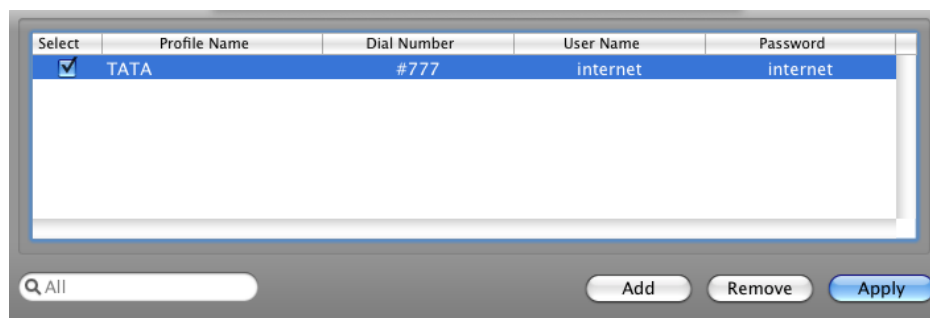


To disconnect, click the disconnect button (  ).

## Network Settings

### Add Profile

On the menu bar of the management program main interface, click the 'Network' menu → Click the 'Setting Profile' item.



There is the default profile to TATA, but if you need to add another profile, you can add as following steps.

- 1) Click 'Add' button.
- 2) Enter the Profile Name as 'TATA'.
- 3) Enter the Dial Number as '#777'.

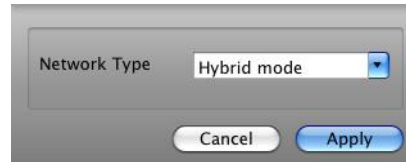


4) Enter the user name as 'internet' and password as 'internet'.

5) Click 'Apply' button in order to save.

### **Setting Network**

On the menu bar of the management program main interface, click the 'Network' menu → Click the 'Setting Network' item.

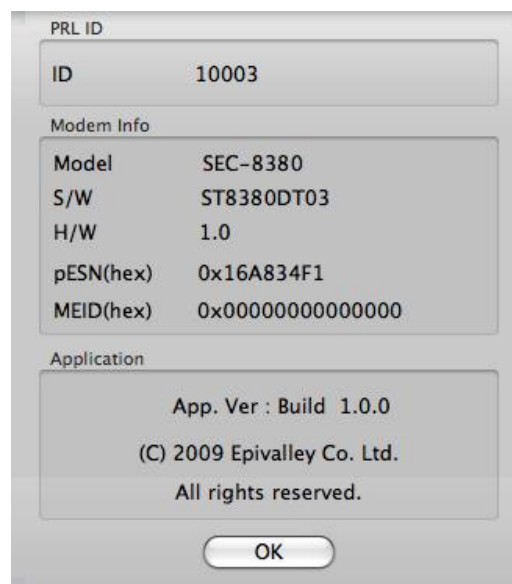


You can change the mode of preference as 'Hybrid mode', '1xOnly' and 'Photon+ Only'.

Preference Mode	Description
Hybrid mode	The Wireless Modem will operate in dual mode with Photon+ and 1x periodically.
1xOnly	The Wireless Modem will operate only in CDMA1x mode without Photon+. You may use the 1xOnly mode in an area without Photon+ coverage.
Photon+ Only	The Wireless Modem will operate only in Photon+ mode without CDMA1x. If you do not need to use the CDMA1x data service, you can disable it.

### **Modem Information**

On the menu bar of the management program main interface, click the 'Network' menu → Click the 'Modem Information' item.



The information tab displays the following items.

1) PRL ID information.

- 2) Wireless Modem information as Model name, S/W version, H/W version, MEID and pESN.
- 3) Application Information Version.

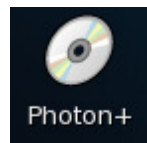
## Installation in Linux

### Installation Procedure

Insert the Wireless Modem into a USB port on your Mac computer. You may see the Photon+ CD Driver on the Desktop.

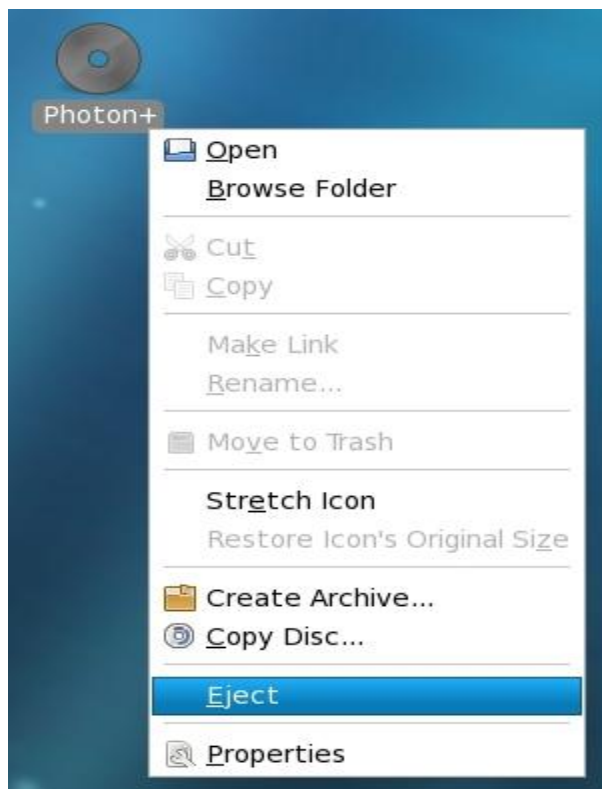
### Start the Setup

Insert the Wireless Modem into a USB port in your computer. The Photon+ CD Driver will



appear on the Desktop.

1. Click the right button of the mouse to displaying the menu.
2. Click the 'Eject' item in the Menu, later the modem port of Wireless Modem will loading in `"/dev/tty"` directory.



**IMPORTANT NOTE:** To use the Internet connection, it should be executed before.

### Configuration Of The Internet Connection on Text Interface

1) Log in the Graphical Interface and open the **'Terminal'** from 'Applications'.

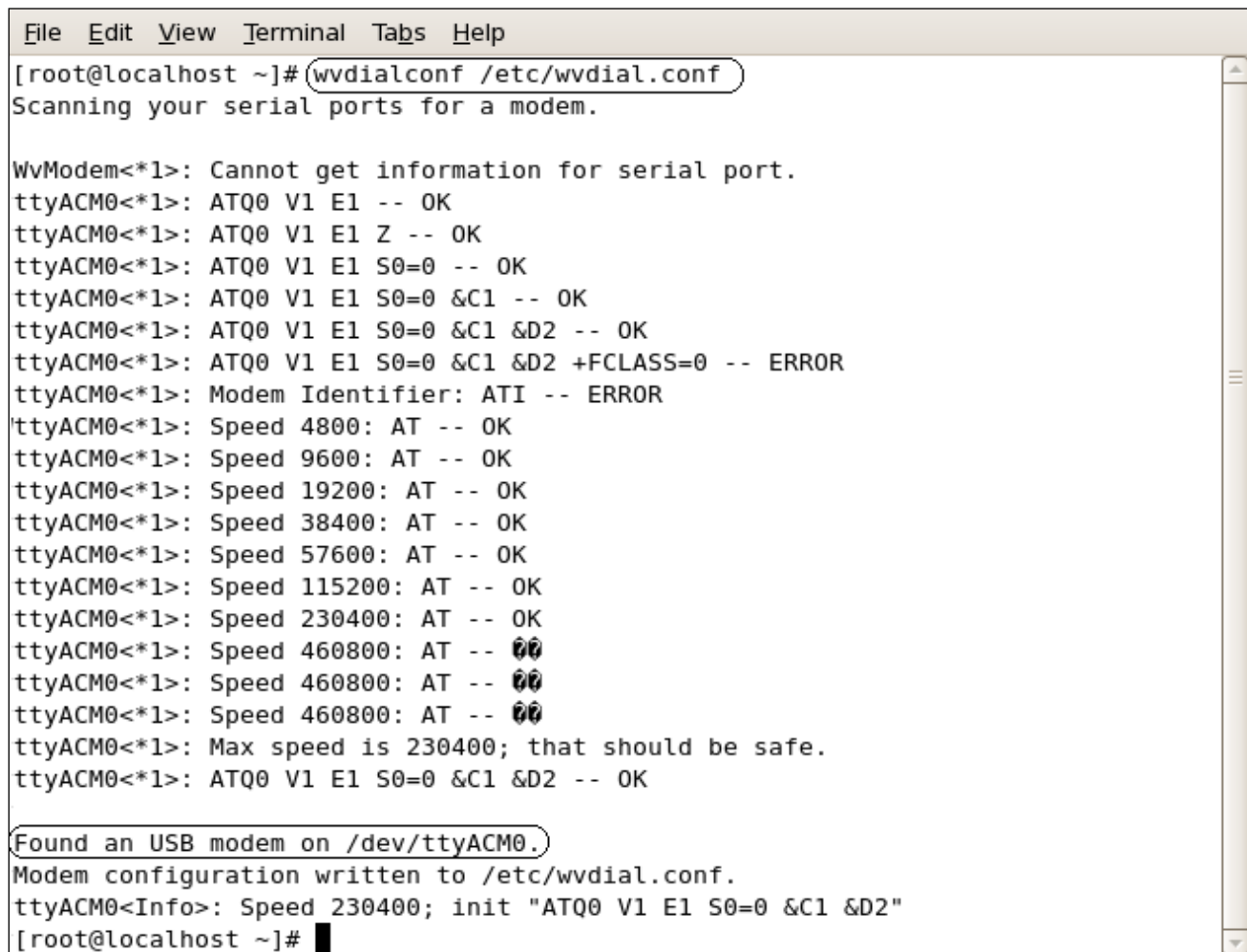
Terminal can be found at;

\* Click 'Applications' → Click 'Accessories' → Click **'Terminal'**.

Or

\* Click 'Applications' → Click 'System Tools' → Click **'Terminal'**.

2) In Terminal, type the command **'wvdialconf /etc/wvdial.conf'** to detect and install the modem for Internet connection.



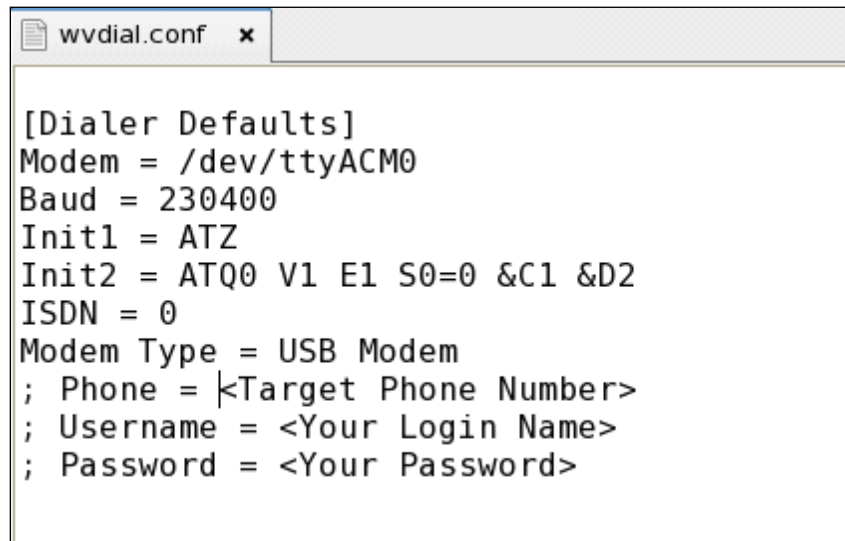
```
File Edit View Terminal Tabs Help
[root@localhost ~]# wvdialconf /etc/wvdial.conf
Scanning your serial ports for a modem.

WvModem<*1>: Cannot get information for serial port.
ttyACM0<*1>: ATQ0 V1 E1 -- OK
ttyACM0<*1>: ATQ0 V1 E1 Z -- OK
ttyACM0<*1>: ATQ0 V1 E1 S0=0 -- OK
ttyACM0<*1>: ATQ0 V1 E1 S0=0 &C1 -- OK
ttyACM0<*1>: ATQ0 V1 E1 S0=0 &C1 &D2 -- OK
ttyACM0<*1>: ATQ0 V1 E1 S0=0 &C1 &D2 +FCLASS=0 -- ERROR
ttyACM0<*1>: Modem Identifier: ATI -- ERROR
ttyACM0<*1>: Speed 4800: AT -- OK
ttyACM0<*1>: Speed 9600: AT -- OK
ttyACM0<*1>: Speed 19200: AT -- OK
ttyACM0<*1>: Speed 38400: AT -- OK
ttyACM0<*1>: Speed 57600: AT -- OK
ttyACM0<*1>: Speed 115200: AT -- OK
ttyACM0<*1>: Speed 230400: AT -- OK
ttyACM0<*1>: Speed 460800: AT -- 00
ttyACM0<*1>: Speed 460800: AT -- 00
ttyACM0<*1>: Speed 460800: AT -- 00
ttyACM0<*1>: Max speed is 230400; that should be safe.
ttyACM0<*1>: ATQ0 V1 E1 S0=0 &C1 &D2 -- OK

Found an USB modem on /dev/ttyACM0.
Modem configuration written to /etc/wvdial.conf.
ttyACM0<Info>: Speed 230400; init "ATQ0 V1 E1 S0=0 &C1 &D2"
[root@localhost ~]#
```

**\* IMPORTANT NOTE:** The modem device name is **'/dev/ttyACM0'**.

- 3) In the Terminal window, input the command '**gedit/etc/wvdial.conf**' to open the configuration file as shown below.



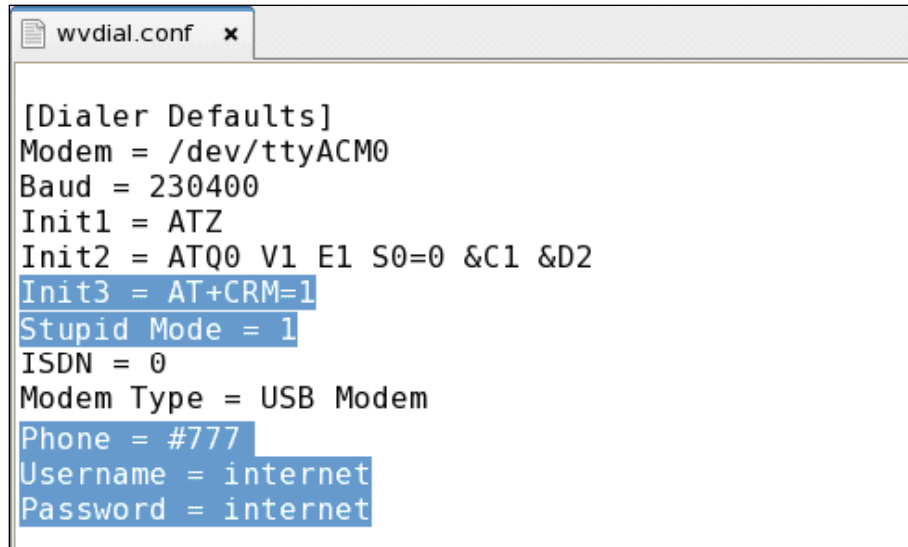
```
[Dialer Defaults]
Modem = /dev/ttyACM0
Baud = 230400
Init1 = ATZ
Init2 = ATQ0 V1 E1 S0=0 &C1 &D2
ISDN = 0
Modem Type = USB Modem
; Phone = <Target Phone Number>
; Username = <Your Login Name>
; Password = <Your Password>
```

- 4) Make the following changes in the configuration file.
1. Delete the semi colon(;) before the last three lines phone, username, password.
  2. Enter Phone no '**#777**', Username '**internet**' and password '**internet**'.
  3. In the end, add 2 extra lines in the configuration file.

**Init3 = AT+CRM=1**

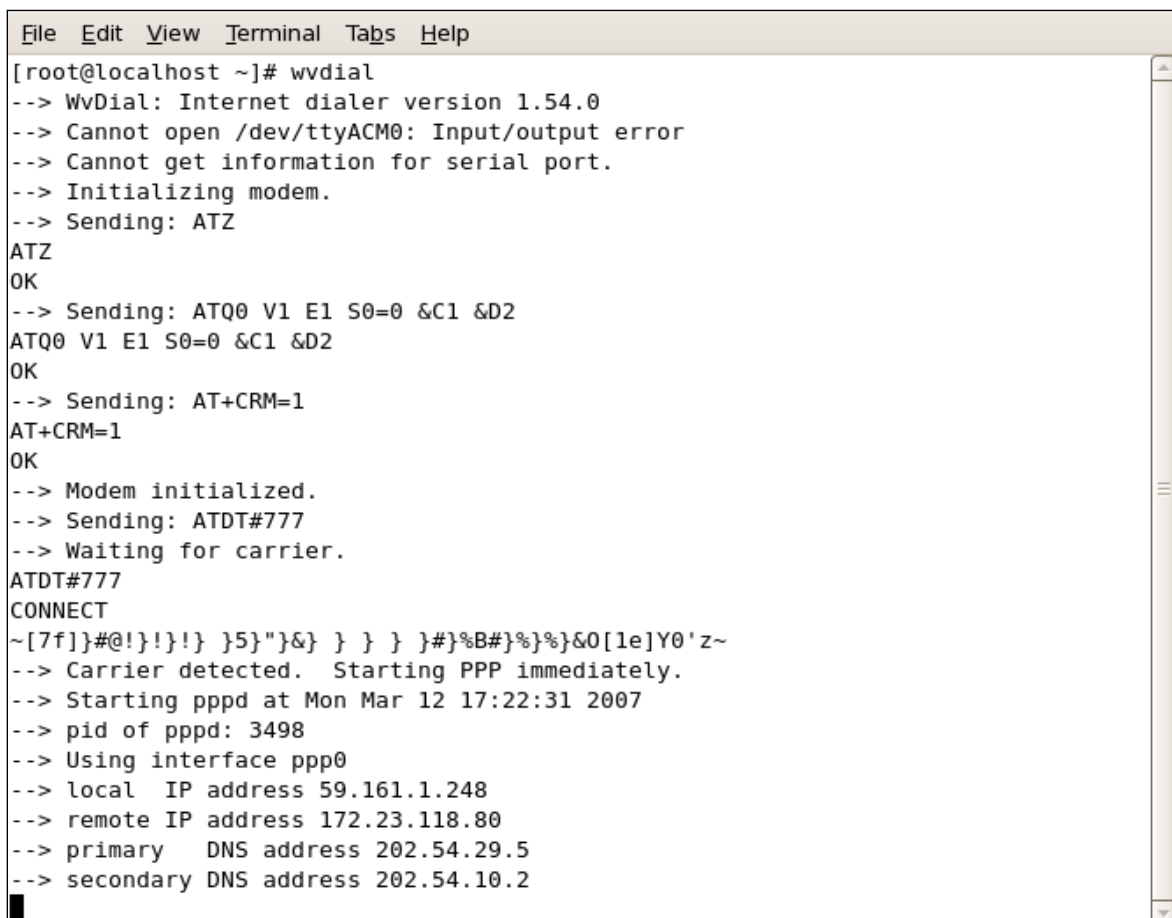
**Stupid Mode = 1**

- 5) After making these changes, save the configuration file and exit from the gedit application.

A screenshot of a text editor window titled 'wvdial.conf'. The window contains the following configuration text:

```
[Dialer Defaults]
Modem = /dev/ttyACM0
Baud = 230400
Init1 = ATZ
Init2 = ATQ0 V1 E1 S0=0 &C1 &D2
Init3 = AT+CRM=1
Stupid Mode = 1
ISDN = 0
Modem Type = USB Modem
Phone = #777
Username = internet
Password = internet
```

6) Run the command '**wvdial**' from Terminal to connect to Internet.

A screenshot of a terminal window with a menu bar (File, Edit, View, Terminal, Tabs, Help). The terminal shows the execution of the 'wvdial' command from a root prompt. The output includes status messages, AT commands being sent, and the successful establishment of a PPP connection with IP addresses and DNS settings.

```
File Edit View Terminal Tabs Help
[root@localhost ~]# wvdial
--> WvDial: Internet dialer version 1.54.0
--> Cannot open /dev/ttyACM0: Input/output error
--> Cannot get information for serial port.
--> Initializing modem.
--> Sending: ATZ
ATZ
OK
--> Sending: ATQ0 V1 E1 S0=0 &C1 &D2
ATQ0 V1 E1 S0=0 &C1 &D2
OK
--> Sending: AT+CRM=1
AT+CRM=1
OK
--> Modem initialized.
--> Sending: ATDT#777
--> Waiting for carrier.
ATDT#777
CONNECT
~[7f]}#@!}!}!} }5}"&} } } } }#}%B#}%}%}&0[1e]Y0'z~
--> Carrier detected. Starting PPP immediately.
--> Starting pppd at Mon Mar 12 17:22:31 2007
--> pid of pppd: 3498
--> Using interface ppp0
--> local IP address 59.161.1.248
--> remote IP address 172.23.118.80
--> primary DNS address 202.54.29.5
--> secondary DNS address 202.54.10.2
```

7) Open browser and start browsing.

8) If not able to browse, run below command in the Terminal once and the system will be ready for browsing.

**'cp /etc/ppp/resolv.conf /etc/ '** It will ask for confirmation to overwrite, type Y to overwrite.

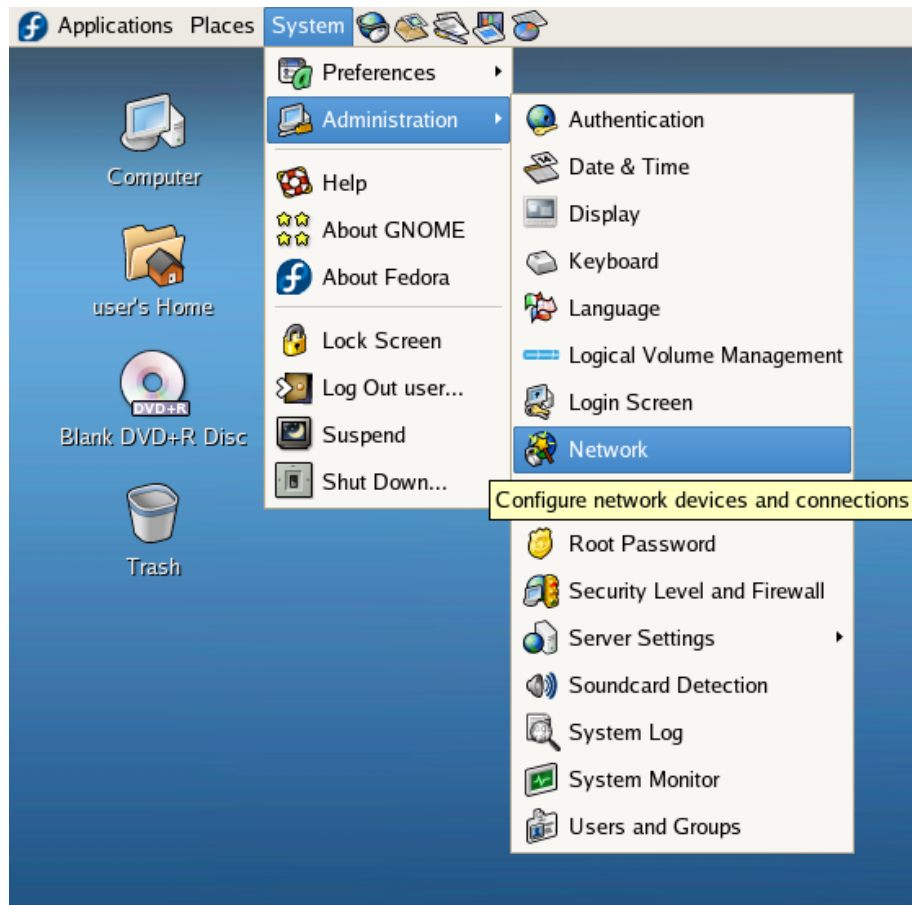
```
File Edit View Terminal Tabs Help
[root@localhost ~]# cp -f /etc/ppp/resolv.conf /etc/
cp: overwrite `/etc/resolv.conf'? y
[root@localhost ~]# █
```

9) To end the data call close the terminal or press **'Ctrl + C'**.

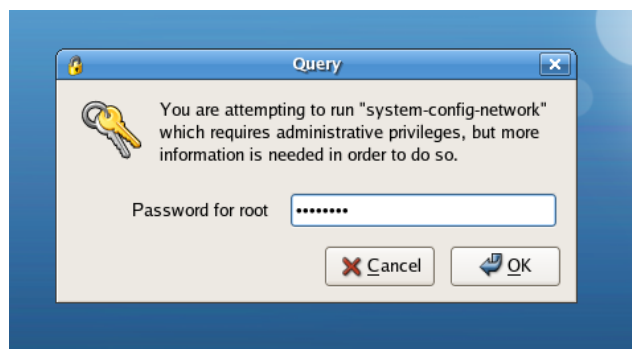
```
Caught signal #2! Attempting to exit gracefully...
--> Terminating on signal 15
--> Connect time 0.3 minutes.
--> Disconnecting at Mon Mar 12 17:22:52 2007
[root@localhost ~]# █
```

### [Configuration of the Internet Connection On Graphic Interface](#)

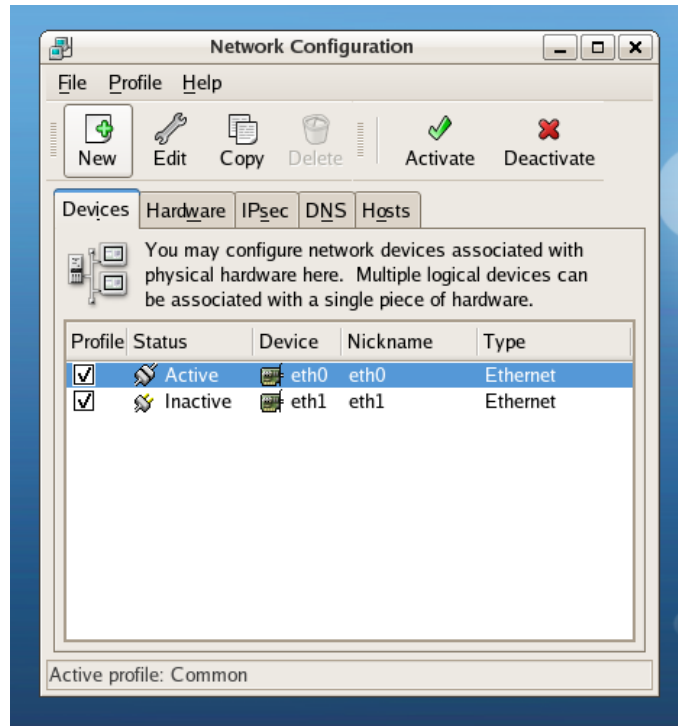
1) Click System menu → Click Administration → Click **'Network'**.



2) Enter the superuser '**Password**'.



3) Click '**New**' on Menu as shown below.

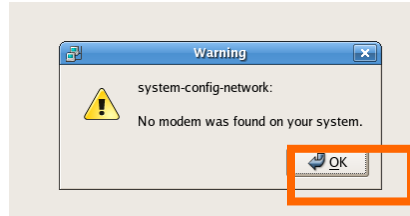


4) Choose '**Modem connection**' and proceed to the next step.

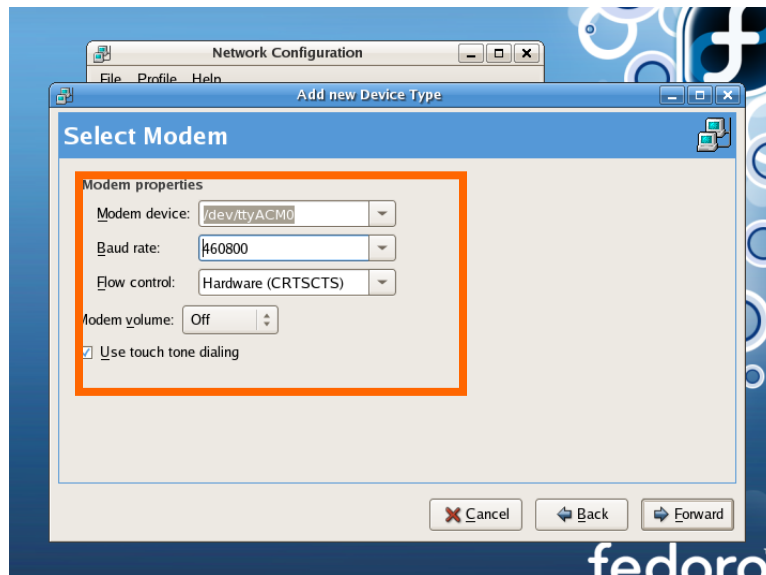


5) You will get an Warning message. Click '**OK**' button to continue.

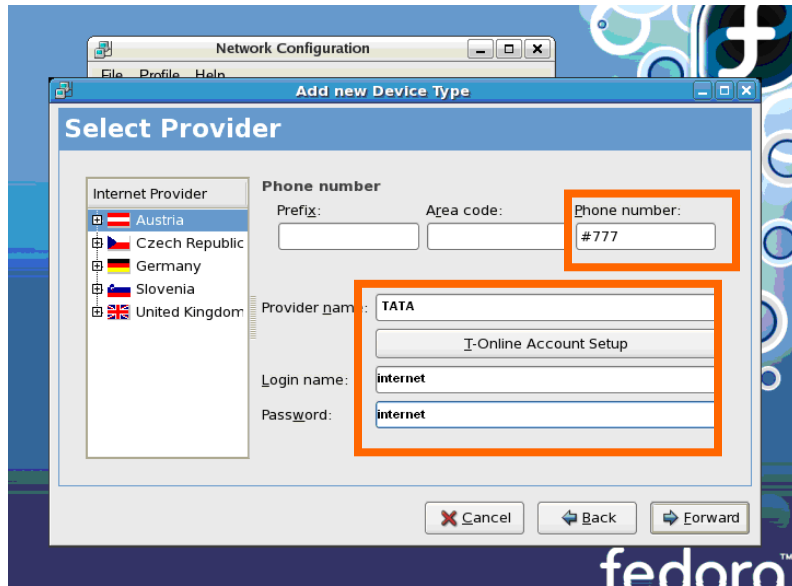




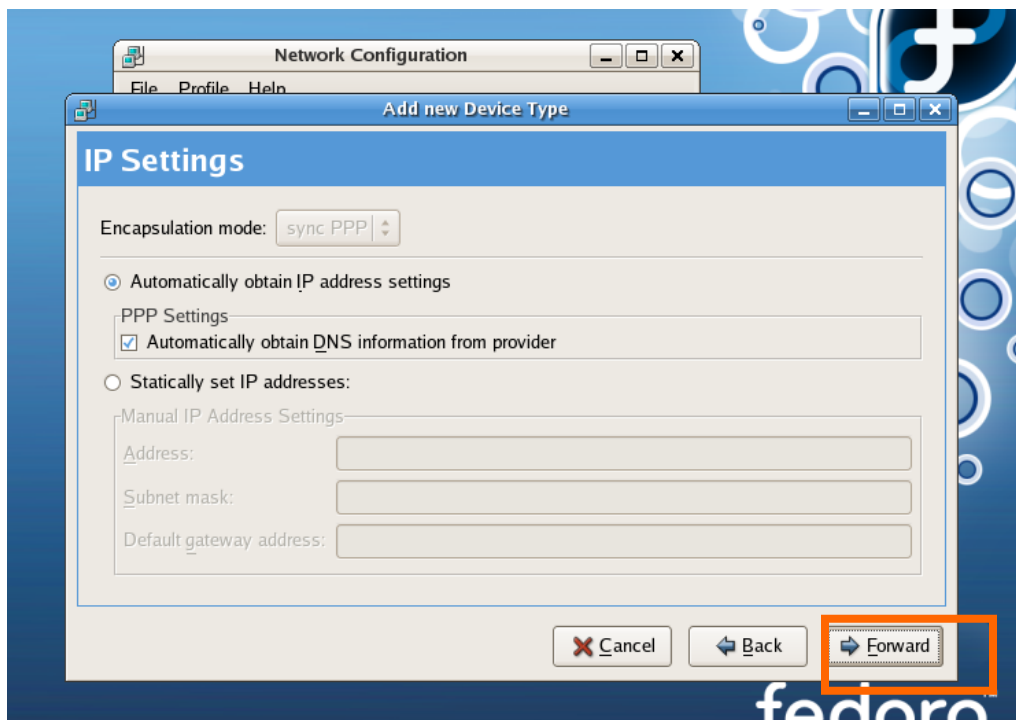
6) For Modem device input **'/dev/ttyACM0'**, for Baud rate input **'460800 bps'**, the maximum rate, and click the **'forward'** button.



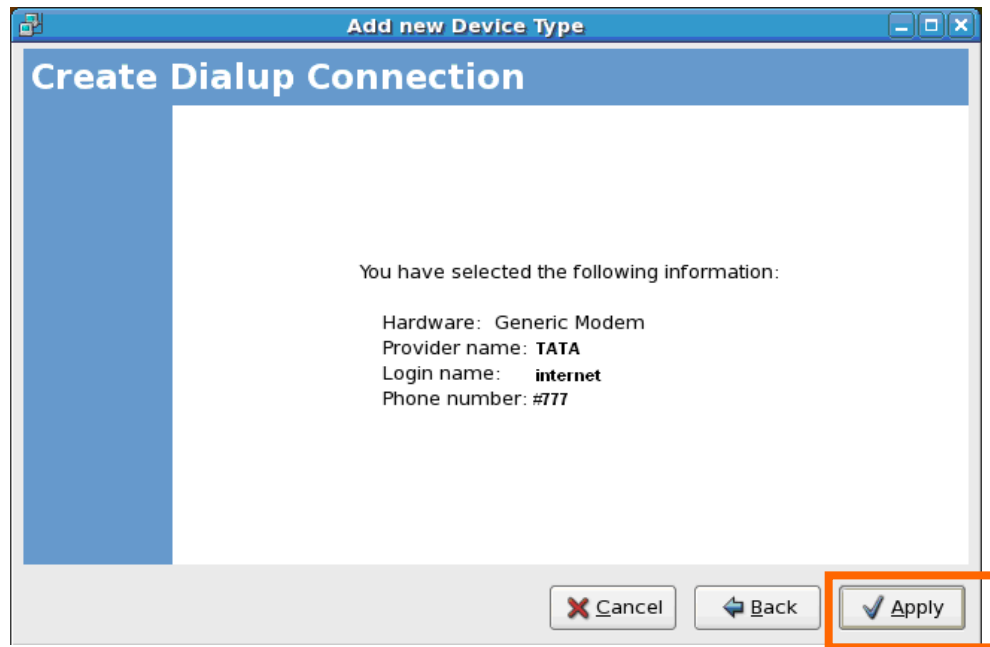
7) Enter Phone no **'#777'** Username **'internet'** and Password **'internet'**.



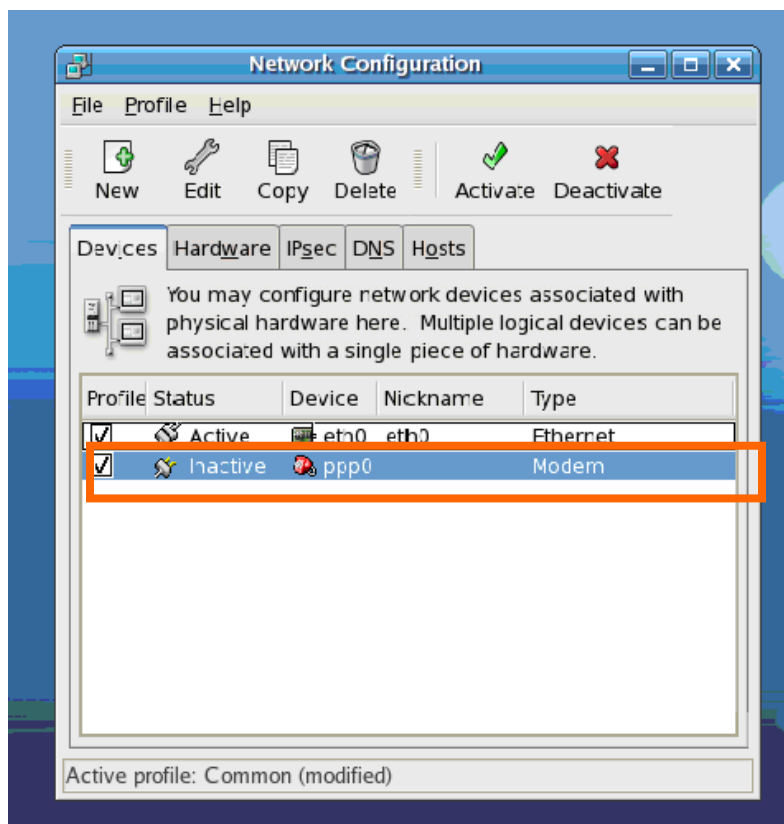
8) Click '**Forward**' button.



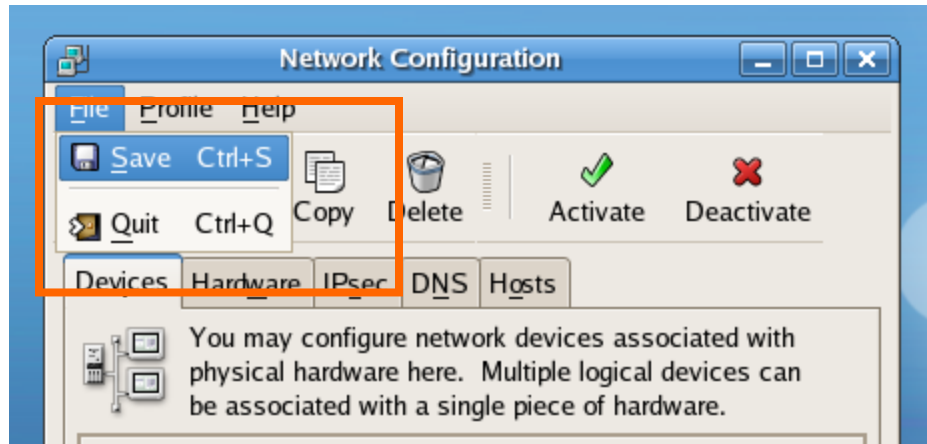
9) Click '**Apply**' button.



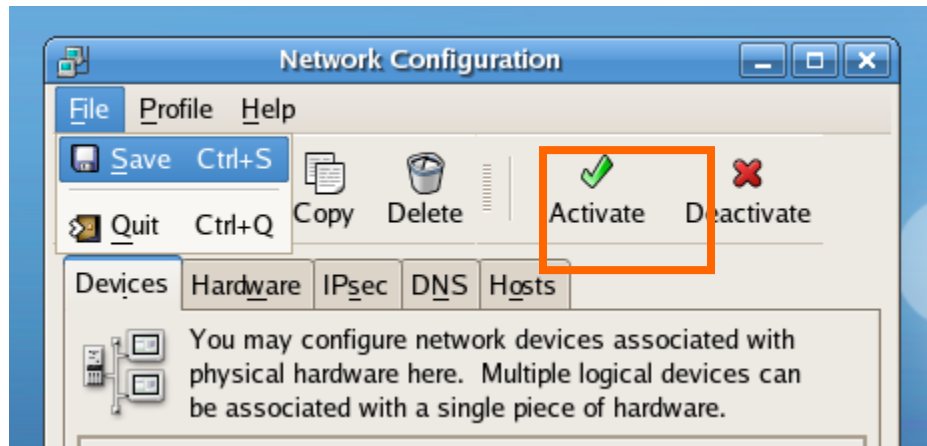
10) You can see the configuration registered in the Network Configuration tool.



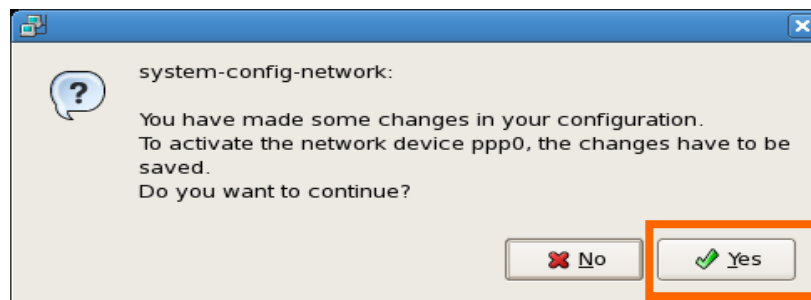
11) Click 'Save' in the 'File' menu.



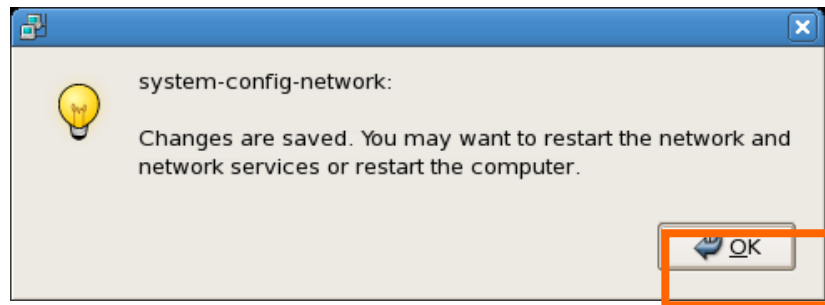
12) Click '**Activate**' button for the Internet connection.



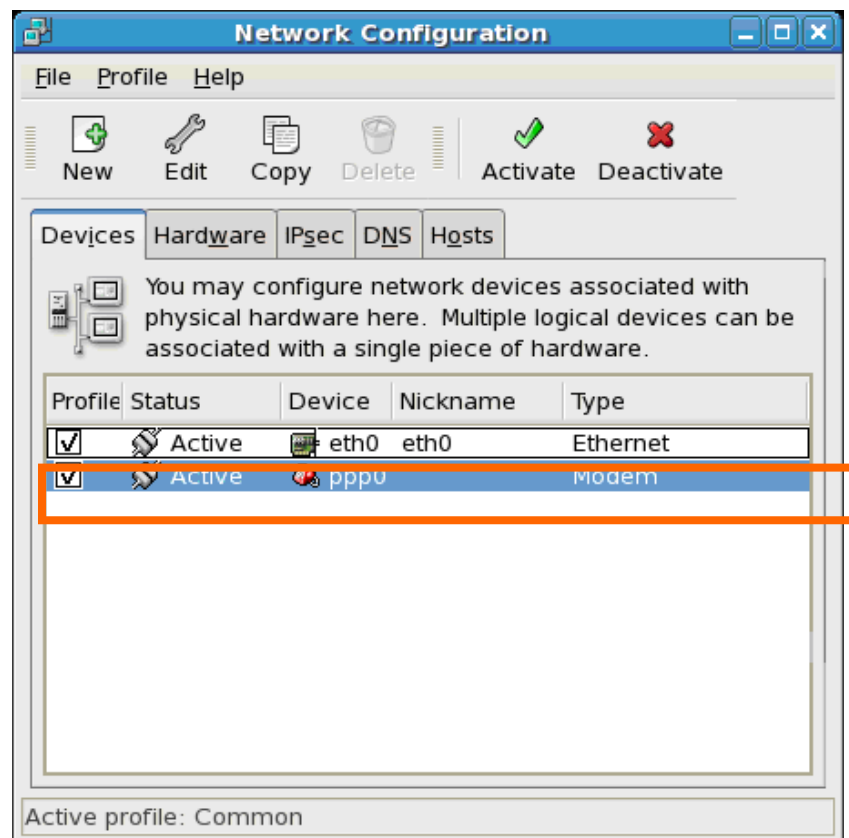
13) Click '**Yes**' button.



14) Click '**OK**' button.



15) Now the Wireless modem is activated.



## FAQ

### Q1. What does each LED color stand for?

You can check the signal strength status from LED colors.

Normally it changes from Red→ Orange→ Green gradually when you plug in the modem.

- Green: Strong signal area
- Orange: Weak signal area
- Red: No service

**Q2. What shall I do if I cannot access the Internet?**

1. Check the network signal strength.
2. Check whether you have activated the wireless online service. You can ask the local network operator on how to activate it.
3. If the Wireless Modem is activated but still you cannot access the internet happen it, please check the User name / Password in the internet profile on Web.

**Q3. In spite of “Green” LED, the Access Manager is still not connected!**

Firstly, Unplug the Wireless Modem.  
Secondly, follow the step “3. Uninstalling Guide” on page 7, and restart your computer.  
Lastly, plug the Wireless Modem again, and follow step “2. Installing Guide”

**Q4. The software is not running automatically and it shows below screen.**

Please follow the steps mentioned the Q3 step again. If the same message appears contact the Service Provider.



**Q5. LED color is still “RED”! There’s no LED light!**

Your Wireless Modem could defect. Please contact the Service Provider.

**Q6. If you need to re-install the Access Manager with the USB Modem driver!**

Please follow the steps mentioned in the answers to the Q3.

**Q7. The Photon+ auto-installation program does not appear automatically.**

The AutoRun feature of Windows might be disabled under the local IT policies on Windows, In this case, you need to install the PC-Dialer manually, following the steps mentioned at “Starting Setup”

**Q8. Can not connect the Activation call.**

Please contact the Service Provider, because your device information might have been improperly registered in the network system.

**Q9. The Activation call is connected, but the Activation proceed is unsuccessful.**

Please contact the Service Provider, because your device information might have been improperly registered in the network system.

**Q10. There are no signal bars on the RSSI indicator of Access Manager and “No service” message is displayed, or the LED of the Wireless Modem is orange or red color.**

The local network signal might be too weak, Contact the Service Provider for assistance.